



Inventor James M. Prom, Nationally Registered Invasive Cardiovascular Technologist, developed **ANGIOGRAM SAM™** models through extensive research and direct experience of 200 cadaver studies and 5000 angiography studies.

Models are designed to provide a level of clinical challenge similar to that encountered in the cardiac catheterization laboratory. Models are intended as tools to enhance learning, teaching, research and marketing.

Instructors and students use the models to practice the invasive transluminal technique. Practitioners can safely hone their skills, practice proper *over the wire* technique, and observe the best angiographic views.

Quick, effective procedures improve outcomes for patients, reduce procedure time for practitioners, and cut medical costs for hospitals.

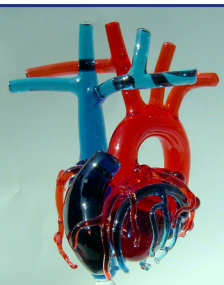
## Order

Phone: 1-888-846-2618

Online: [www.angiogramsam.com](http://www.angiogramsam.com)

Questions: [info@angiogramsam.com](mailto:info@angiogramsam.com)

We accept PayPal, VISA, MasterCard, Discover, ACH Direct Bank Transfers and qualified purchase orders.



## Additional Models

### Angiogram Sam Plus

(extended carotids)

Model AS-1005 \$599

### Carotid Charlie

Model CC-1200 \$399

### Pacemaker Pete

Model PP-2000 \$250

### Femoral Fred

Model FF-5000 \$159

### Bilateral Bob (without carotids)

Model BB-6000 \$850

### Angiogram Sam w/ Radial Artery

Model AS-1300 \$625

### Angiogram Sam Plus

w/ Radial Artery

Model AS-1305 \$650

### Angiogram Sam I.M. CABG X3

Model AS-1400 \$690

### Angiogram Sam I.M. CABG X2

Model AS-1500 \$650

### Angiogram Sam Plus

I.M. CABG X3

Model AS-1405 \$740

### Angiogram Sam Plus

I.M. CABG X2

Model AS-1505 \$700

# ANGIOGRAM SAM™

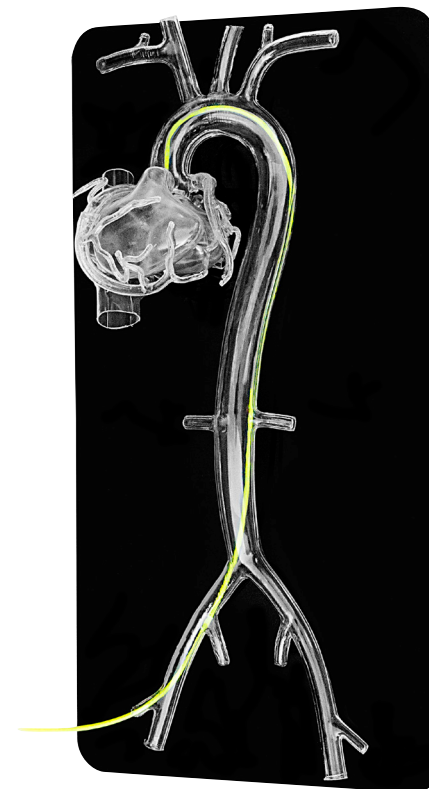
Technique is Everything

## Training Models

Interventional

Cardiology

Radiology



“Perfect for marketing, research, design and education.”

Complete line of high-quality training models designed to to improve invasive technique and procedural outcomes.

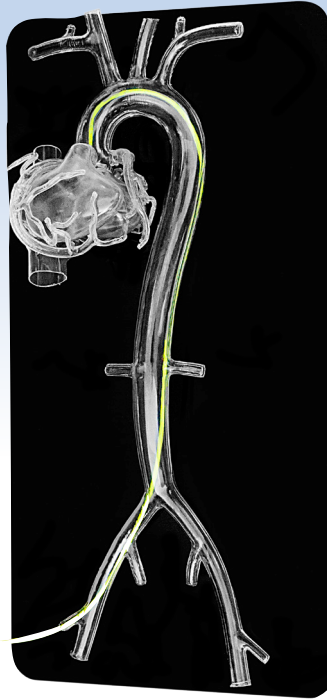


## Angiogram Sam™

**Model AS-1000** \$549

### DESCRIPTION:

- Adult male arterial system
- Durable clear plastic
- Smooth hollow arteries allow insertion and advancement of wires, catheters, stents, and devices
- Four chambers of heart in diastole for maximum catheter movement
- Right dominant coronary system for better visibility
- Bilateral iliacs with sheath ports
- X-ray imagable
- Lexan Stand allows supine, RAO, and LAO positioning

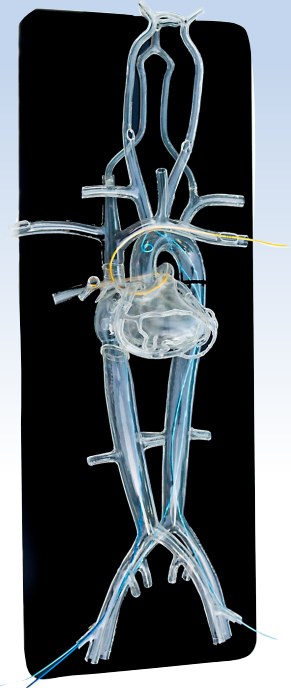


## Bilateral Bob Plus

**Model BB-6050** \$930

### DESCRIPTION:

- Adult male arterial and venous system
- 3.0 MM ASD for EP catheters and valvuloplasty
- All of the arteries and veins of the Angiogram Sam™ Plus and Venous Venn models combined
- Bilateral iliacs with sheath ports



## Venous Venn

**Model VS-3000** \$525

### DESCRIPTION:

- Adult male venous system
- Durable clear plastic
- Smooth hollow veins allow insertion and advancement of pacemaker leads, EP catheters, and ASD devices
- Four chambers of heart in diastole for maximum catheter movement
- Complete open coronary sinus
- Bilateral iliacs with sheath ports
- Anterior subclavian ports for PPM leads
- X-ray imagable



**NEW for 2012!**



## Upright Angiogram Sam™

**Model AS-7000** \$599

### DESCRIPTION:

- Upright arterial system
- Angiogram Sam™ model mounted on a vertical stand
- 80% curve in iliac segment represents tortuosity for more challenging 'over the wire' technique
- Mahogany stand with sheath port allows for closer visualization while manipulating catheters.
- Great for office demonstrations

**ANGIOGRAM SAM™** Family of Models are made of clear, durable, blow-molded plastic.